

# EEB & Biology Major Electives

## Fall 2024

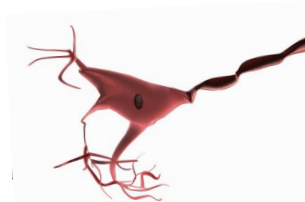
### Organismal

#### Macro-

ACBS 315 R & L\* - Physiology of Reproduction  
ACBS 400 A- Animal Anatomy & Physiology A  
ECOL 401 - Ecological Physiology  
**ECOL 484 - Ornithology\***  
*ECOL 485 - Mammalogy\**  
**ECOL 487 R & L - Animal Behavior**  
ENTO 415 R - Insect Biology  
NROS 420 - Neuroscience of Survival

#### Micro-

ACBS 329 A - Microbial Diversity  
ACBS 427 R - General Mycology  
ACBS 423 - Mechanisms of Disease  
ACBS 449 - Diseases of Wildlife  
**ECOL 407 - Disease Ecology and Evolution**  
ECOL 409 - Evolution of Infectious Disease  
ECOL 410 - Microbial Biogeochemistry and Global Change  
ENVS 425 - Environmental Microbiology  
MIC 329 A - Microbial Diversity  
MIC 427 R - General Mycology  
PLS 448 A - Plant Biochemistry and Metabolic Engineeri



### Ecology, Evolution & Behavior

ECOL 326 - Genomics  
ECOL 345 - Biodiversity and the Tree of Life  
**ECOL 407 - Disease Ecology and Evolution**  
ECOL 409 - Evolution of Infections Disease  
ECOL 480 - Mathematical Models in Biology  
**ECOL 487 R & L - Animal Behavior**  
ENTO 415 R - Insect Biology  
ENVS 442 - Limnology \*  
*ENVS 477 - Ecotoxicology*  
GEOS 330 - Introduction to Remote Sensing  
GEOS 478 - Global Change  
MIC 329A - Microbial Diversity  
PLS 477 - Applied Plant Biodiversity  
RNR 316 - Natural Resource Ecology  
RNR 355 - Introduction to Wildland Fire  
**WFSC 444 - Wildlife Ecology, Conservation, and**

**Management\***



### Physiology

ACBS 315 R & L - Physiology of Reproduction  
ACBS 400 A- Animal Anatomy & Physiology A  
ECOL 401 - Ecological Physiology  
ENTO 401 - Ecological Physiology  
MIC 432 - Comparative Immunology  
NROS 420 - Neuroscience of Survival  
PSIO 380 - Fundamentals of Human Psio

PSIO 201 and 202 when taken together can count for this requirement and a lab requirement. Be sure to still complete 42 upper division units when using this option.

### Science & Society

ECOL 409 - Evolution of Infectious Disease  
EPID 309 - Intro to Epidemiology  
HPS 387 - Health Disparities/ Minority Health  
LAW 459 - Public International Environmental Law  
**MCB 404 - Bioethics**  
PA 321 - Medical Ethics  
PHIL 347 - Neuroethics  
PHP 305 - Population Health in Digital Age  
PHP 308 - Community Health Ed/Disease Outbreaks

### Cell & Molecular Biology

ACBS 423- Mechanisms of Disease  
ECOL 345 - Biodiversity and the Tree of Life  
ECOL 326 - Genomics  
*ENVS 477 - Exotoxicology*  
MCB 325 - Biology of Cancer  
**MCB 422 - Problem Solving with Genetic Tools\***  
MIC 350 - Core Concepts in Molecular Microbiology  
**MIC 419 - Immunology**  
MIC 420 - Pathogenic Bacteriology  
MIC 432 - Comparative Immunology  
NROS 430 - Neurogenetics  
PLS 359 - Plant Cell Structure & Function  
PLS 448 A - Plant Biochemistry and Metabolic Engineering

### Genetics

ECOL 326 - Genomics  
ECOL 345 - Biodiversity and the Tree of Life  
ECOL 430 - Conservation Genetics  
**MCB 422 - Problem Solving with Genetic Tools\***  
MCB 340 - Introduction to Biotechnology  
NROS 430 - Neurogenetics



BOLD is writing emphasis, ITALICS are field, \* is lab

While some courses are listed in multiple elective categories above, you may only use a course once within your major electives.

For example if you take ACBS 400B, it will apply for either an organismal **OR** physiology elective—**NOT BOTH**.