

EEB & Biology Major Electives

Spring 2024

Organismal

Macro-

ACBS 400 B- Animal Anatomy & Physiology

ACBS 443- Research Animal Methods *

ACBS 456- Aquaculture

ECOL 330- Evolution of Animal Form & Function

ECOL 404 R- Biology of the Oceans

ECOL 437- Vertebrate Physiology*

ECOL 480- Math Models in Biology

ECOL 483- Herpetology *

*ECOL 484- Ornithology**

ENTO 457- Medical & Veterinary Entomology

NROS 381- Animal Brains, Signals, Sex & Social Behavior

PLS 360- Plant Growth and Physiology

Micro-

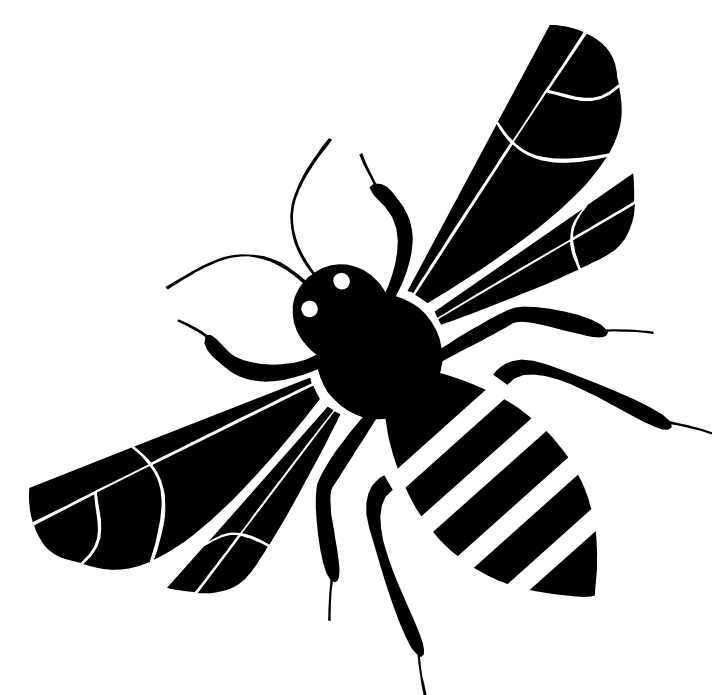
ACBS 403 R- Biology of Animal Parasites

ACBS 406- Diseases of Companion Animals

MIC 328 R - Microbial Physiology

PLP 428R- Microbial Genetics

PLP 428L- Microbial Genetics Lab*



Ecology, Evolution & Behavior

ECOL 330- Evolution of Animal Form & Function

ECOL 345- Biodiversity and the Tree of Life

ECOL 346- Bioinformatics*

ECOL 360- Marine Ecology and Conservation

ECOL 404 R- Biology of Oceans

ECOL 406 R- Conservation Biology

ECOL 412 A- Ocean Science

ECOL 412 B- Ocean Science Field Course

ECOL 480- Mathematical Models in Biology

*ECOL 484- Ornithology**

ENVS 477- Ecotoxicology

GEOS 330- Introduction to Remote Sensing

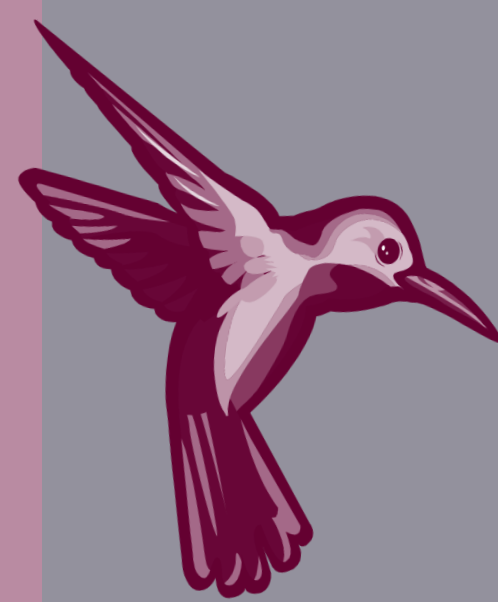
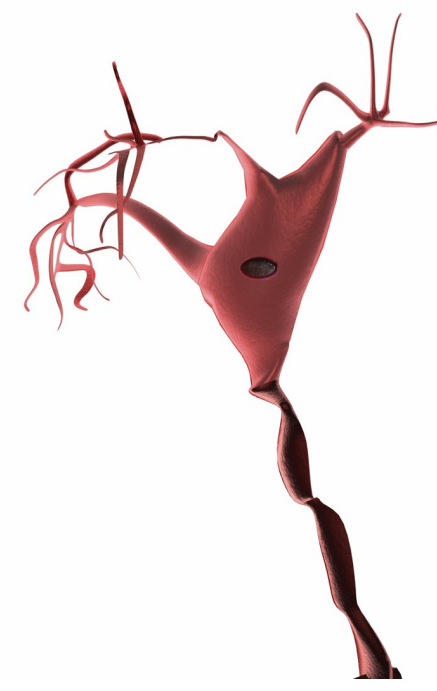
NROS 381- Animal Brains, Signs, Sex & Social Behavior

RNR 316- Natural Resource Ecology

RNR 355- Introduction to Wildland Fire

WFSC 445- Population Ecology

WFSC 447- Wildlife Conservation Behavior



Physiology

ACBS 400 B- Animal Anatomy & Physiology

ACBS 409- Environmental PSIO of Domestic Animals

ECOL 330- Evolution of Animal Form & Function

ECOL 437- Vertebrate Physiology*

MIC 328 R - Microbial Physiology

PSIO 380- Fundamentals of Human Psio

PLS 360- Plant Growth & Physiology

PSIO 201 and 202 when taken together can count for this requirement and a lab requirement. Be sure to still complete 42 upper division units when using this option.

Science & Society

ECOL 360- Marine Ecology and Conservation

ECOL 406 R- Conservation Biology

EPID 309- Intro to Epidemiology

HPS 387- Health Disparities/ Minority Health

LAW 459- Public International Environmental Law

MCB 404- Bioethics

PA 321- Medical Ethics

PHIL 347- Neuroethics

PHP 305- Population Health in Digital Age

PHP 308- Community Health Ed/Disease Outbreaks

Cell & Molecular Biology

ECOL 345- Biodiversity and the Tree of Life

ENVS 477- Exotoxicology

MCB 411- Molecular Biology

MCB 416 A- Stats Bioinformatics & Genomic Analysis

MCB 433- Medical and Molecular Virology

MCB 473- Recombinant DNA Methods & Applications*

NROS 430- Neurogenetics

Genetics

ECOL 345- Biodiversity and the Tree of Life

ECOL 346- Bioinformatics*

ECOL 428 R- Microbial Genetics

MCB 416 A- Stats Bioinformatics & Genomic Analysis

MCB 473- Recombinant DNA Methods & Applications *

NROS 430- Neurogenetics

PLP 428 R - Microbial Genetics

PLS 312- Plant & Animal Genetics

PLS 340 L- Biotechnology Laboratory *

BOLD is writing emphasis, ITALICS are field, * is lab

While some courses are listed in multiple elective categories above, you may only use a course once within your major electives.

For example if you take ACBS 400B, it will apply for either an organismal **OR** physiology elective—**NOT BOTH**.

